

secure, reliable end-to-end
connectivity for your business

BUSINESS SOLUTIONS

Business Connectivity - International

GUARANTEED
DELIVERY

Key Benefits to your business

- **Availability and efficient connectivity:** The service provides a fast, efficient and secure connection which improves data throughput and organizational productivity.
- **Single point of contact:** The service offers the convenience of a single point of contact for ordering, provisioning, billing and maintenance. Management activities taken care by Etisalcom on regular basis to maintain and upgrade the service.
- **Round the clock support:** Support is provided around the clock to ensure reliability of service.
- **Bandwidth:** Circuits are available at bandwidths between 64Kbps upto 45Mbps for MPLS and 96Kbps to 2Mbps for IPLC.
- **A fully scalable solution with minimal investment**
- **Guaranteed performance with prioritized traffic**
- **Supports multiple protocols and interfaces**
- **Secure access anywhere in the world for intranet and extranet with value-added services**

International MPLS

Etisalcom International MULTI-PROTOCOL LABEL SWITCHING (MPLS) technology provides managed point-to-point connectivity solution. This managed service employs fiber-optic cabling to provide end-to-end private circuits between two international destinations, with a single point of contact to facilitate the ordering, provisioning and management of the service. It simplifies network operations significantly and is based on industry-wide standards.

International Private Leased Circuit (IPLC)

Etisalcom IPLC provides a dedicated end-to-end link of a defined bandwidth that's always on and charged at a flat rate for unlimited usage.

Depending on the destination and the media available, cable links are used to provide a permanent end-to-end connection that can handle data, voice, video, facsimile or a combination of these data formats. The service supports a wide range of speeds from 256 Kbps to 2Mbps (the speed can range upto DS-3 or STM-1 based on demand).

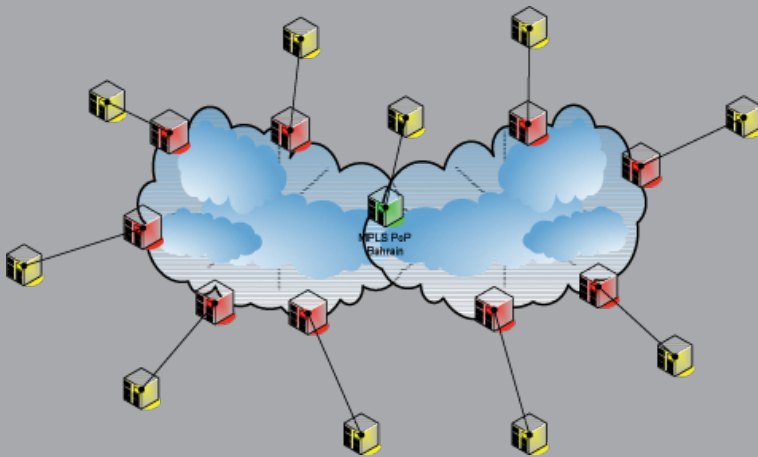
On-net Destinations

GCC	Asia	EMEA	South Central Asia	US	Oceania
Bahrain	Malaysia	Egypt	Sri Lanka	New York	Australia
Saudi Arabia	Singapore	South Africa	Pakistan	Los Angeles	
Kuwait	Indonesia		India		
Qatar	Hong Kong		Bangladesh		
UAE	Japan				
Oman					

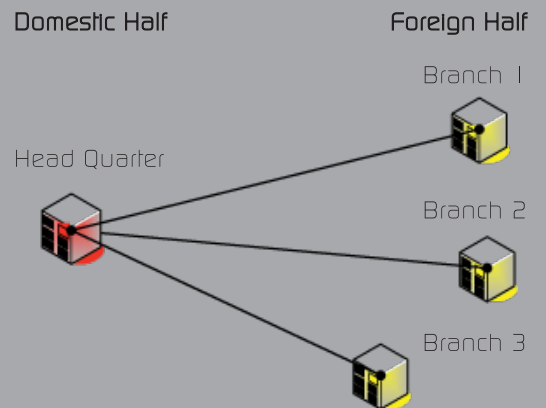
Off-net Destinations

Europe & Middle East	Asia & Oceania	South America
Austria	Taiwan	Argentina
Belgium	Korea	Brazil
Czech Rep	China	Chile
Denmark	Australia	Colombia
Germany	New Zealand	Ecuador
Hungary	Japan	Guatemala
Switzerland	India	Mexico
Luxemburg	Philippines	Peru
Netherlands	Vietnam	Venezuela

Any to Any Connectivity - IP VPN (MPLS)



One to One Connectivity - IPLC



*Discounts are available depending on factors such as contractual terms. Prices are subject to change. For latest update, contact sales@etisalcom.com or call 1 330 1 330.